

## PD8000 Mortise Locks with Flush Pulls for Pocket Door with FH22 Luna Flush Pull



### Application

For residential or commercial application.

### Specification

Standard Door Thickness: 1-3/4" (45mm), Thick door kits available  
 Backset: 2-3/4" (70mm)  
 Handing: Non-Handed  
 Thumb-turn Spindle: 5x5mm square  
 Lock Case: 3-21/32" x 6" x 11/16" (93 x 152 x 17mm)  
 Deadbolt: 1" (25.4mm)  
 Cylinder: Schlage C keyway 5 pin mortise cylinder with 2 keys (KD). Keying Services available. Order Separately.

### Material

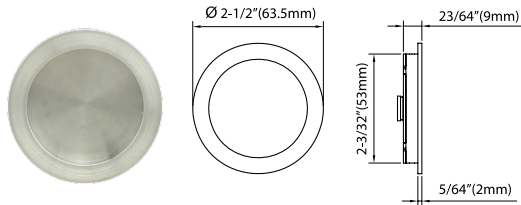
Flush Pull: Stainless Steel / Brass  
 Lockcase: Heavy Gauge Plated Steel  
 Faceplate Strike: Stainless Steel  
 Cylinder: Solid Brass with Stainless Steel Face Cover

### Finish

32D - (630) Satin Stainless Steel  
 32 - (629) Bright Stainless Steel  
 3 - (605) Bright Brass  
 38 - (609) Aged Brass  
 15 - (619) Satin Nickel (Brass)  
 14 - (618) Polished Nickel (Brass)  
 10B - (613) Oil Rubbed Bronze (Brass)  
 26D - (626) Satin Chrome (Brass)

Trim	Function*	Item Code
FH22 Luna	Passage	FH22PD8010
FH22 Luna	Passage w/Dust Proof Strike	FH22PD8115
FH22 Luna	TT08 Thumbturn Deadlock w/ Emergency Release	FH22PD8440
FH22 Luna	Key x TT08 Thumbturn Deadlock	FH22PD8450
FH22 Luna	TT08 Thumbturn Deadlock	FH22PD8460
FH22 Luna	Dummy	FH22DP

\*All Functions with Mortise Lockcase include Built-in Edge Pull, Except Dummy Function

**FH22 Luna Flush Pull**

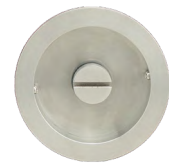
**FH2200**  
Flush Pull Only



**FH2203**  
Flush Pull w/  
Cylinder Hole



**FH2282**  
Flush Pull  
w/ TT08  
Thumbturn



**FH2204**  
Flush Pull w/  
Thumbturn  
Release

**Functions**

	<p><b>PD8010</b> <b>Passage w/ Lockcase</b> Used as flush pull or matching trim on pairs of doors. Edge finger pull operated by the push button.</p>		<p><b>PD8440</b> <b>Privacy w/ Emergency Release</b> Deadbolt operated by inside thumbturn or outside emergency release coin turn. Edge finger pull operated by the push button.</p>
	<p><b>PD8115</b> <b>Passage w/ Lockcase as Dust Proof Strike</b> Lockcase used as dust proof strike on pair of doors inactive side. Edge finger pull operated by the push button.</p>		<p><b>PD8450</b> <b>Entry w/ Single Cylinder</b> Key outside or thumb-turn inside retracts deadbolt with hook. Edge finger pull operated by the push button.</p>
	<p><b>DP</b> <b>Dummy/Passage without Lock Case</b></p>		<p><b>PD8460</b> <b>Patio</b> Deadbolt operated by thumbturn from inside only. Edge finger pull operated by the push button.</p>